



MinEnergi2

Digital Energy Management Platform

Energy efficiency with MinEnergi2

Digital Energy Management typically helps to reduce 10-30% of your total energy consumption. It ensures a short payback period on a long-term platform. Beneficial for both the budget and the climate.

Introduction to Digital Energy Management

A single platform for all your energy

MinEnergi2 is a complete solution for registering and monitoring your energy data – encompassing a total of 6 consumption areas. Your own energy production can also be aggregated into the platform.

Energy consumption



Electricity, heat, cooling

Resource consumption



Water, heat, transportation, waste

Energy production



Wind turbines, solar panels, surplus heat, heat pump

We collect your consumption data by remotely reading your meters whilst integrating other systems such as facility management software, building management systems, waste management systems, fleet management systems and more. Enabling you to visualise your data on a single platform.

Create opportunities with an open and integrable solution

The system's ability to integrate with other systems for data sources is of immense importance. Data collection can consist of many parts, and companies are different. Therefore, it is crucial to choose an EMS that can gather all your energy data in one system and integrate multiple solutions – completely automated and entirely without human involvement.

MinEnergi2 is an open and fully integrable platform – with the ability to communicate through APIs with other systems. This gives our customers the freedom to expand, modify, and shape the SmartBuilding or digital setup according to their sustainability reporting needs.



Gain a holistic view of your daily energy operations

MinEnergi2 has a variety of tools that provide you with a holistic overview, including alarms and analysis tool to identify energy and water overconsumption, alongside an automated budget and reporting function. Last but not least, visualise the positive effects of your optimisation efforts on consumption, finances, and CO2 emissions.

Standby analysis

Analysis of consumption outside of usage/operation/opening hours.

Dashboard & Overview

Complete view across all registered locations, buildings, meters, and energy sources.

Key Performance Indicator (KPI) Analysis

Overview of calculations for various key performance indicators based on parameters such as period, location, building, energy type, etc.

Climate Accounting

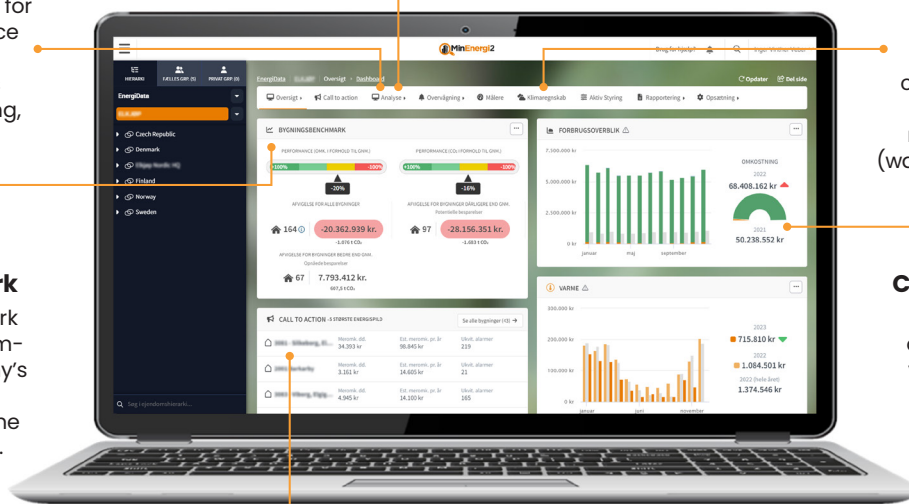
Preparation of a climate account with climate & environmental data including energy consumption (electricity, heating, cooling) and resource consumption (water, waste, transportation).

Building benchmark

The building benchmark analysis presents a comparison of your company's buildings with corresponding buildings in the MinEnergi2 database.

Consumption Analysis

Presentation of the current consumption of various energy sources compared to previous periods/sections and stored budgets.



Alarms & Call-to-Action

Overview of deviations from planned additional costs. Basis for maintenance and repairs.

Integration with other systems

Import and export to other software solutions such as building management systems, facility management, waste management, fleet management, CTS (Control and Technical Systems), metering software, and more.

Documentation & Reporting

In MinEnergi2, you can send consumption-related reports, with different specified frequencies, to relevant stakeholders within your company or externally.

Benefits of choosing MinEnergi2

Make energy a cohesive workspace

The MinEnergi2 platform is designed to automate the manual administration of larger building portfolios, fleets, and production lines. The platform provides you with an overview of consumption, production, and efficient reporting tools.

Energy analysis

As a company, you should be able to setup, collect, analyse, and report with an approach that suits your business. MinEnergi2 is structured around businesses' needs to analyse their data at various levels, thus providing different reporting outputs.

Energy savings pay for the investment

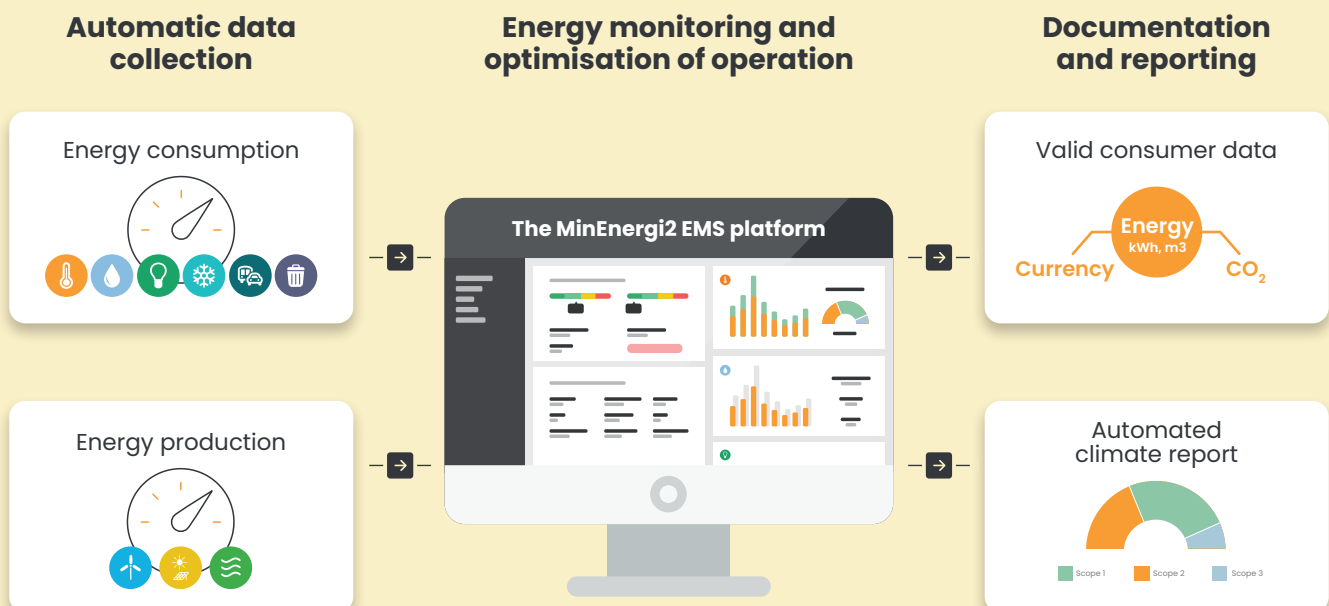
Efficient energy management leads to significant annual energy savings, reduced costs, and benefits regarding CO2 emissions and the climate. The energy savings pay for the investment, with an average payback period ranging from 1 to 2 years.

EMS-based climate reporting

Our EMS platform, MinEnergi2 is at the heart of **digitalising the process for data collection** and documentation for climate reports. Here we register data on your energy consumption, in as much detail as you require in order to be able to report. Moreover, we can also register data about your energy production using sub-meters to measure aspects such as output from wind turbines, solar panels and surplus heat, which can then be included in your report.

You can use the EMS system to monitor your consumption and optimise operations through the use of tools such as alarms, benchmark analyses and forecasting, so that you can start to realise your savings potential.

The results can be documented in various types of report, including a climate and environment report prepared on the basis of GHG Protocol Scopes 1, 2 and 3.



How do we define the climate report in MinEnergi2?

A climate report – also known as carbon accounts or environmental accounts – is one way to measure and report a company's total carbon emissions and their impact on the climate. It provides you with a systematic method for collecting, registering and assessing data about your company's climate impact.

The climate report in MinEnergi2 encompasses both direct and indirect carbon emissions. Direct emissions, known as "Scope 1 emissions", include emissions from the company's own sources: fuel for transport and energy consumption at the company's properties, for example. Indirect emissions, known as "Scope 2 emissions", comprise emissions from

external generation of the energy that the company uses: electricity purchased from a power plant, for instance. The climate report can also include indirect emissions from activities that are beyond the control of the company itself – "Scope 3 emissions", as they are also known. These can include emissions-related activities in the supply chain, transport of goods and services, waste management and staff commutes.

This provides you with a broad yet accurate image of your company's climate impact in the field of energy and resource consumption (electricity, water, heating, cooling, transport and waste), as well as any energy generated in-house.

MinEnergi2 can serve as both the primary and secondary system

Climate reporting comprises of multiple parts, so we have made it possible to integrate various solutions whilst digitalising the data collection for your climate reporting.



MinEnergi2 can serve as the primary system in your consolidated climate reporting, as it can receive supplementary data from other systems (such as waste management systems, fleet management systems, BMS and so on).

It can also function as a supplementary system that supplies energy data to existing systems via APIs. This enables our customers to have the freedom to expand, alter and shape the SmartBuilding or the digital setup for the sustainability reporting they prefer.

Supporting your climate and environmental reports

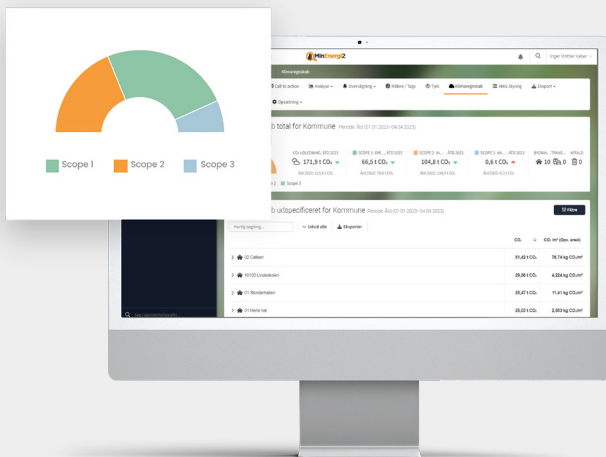
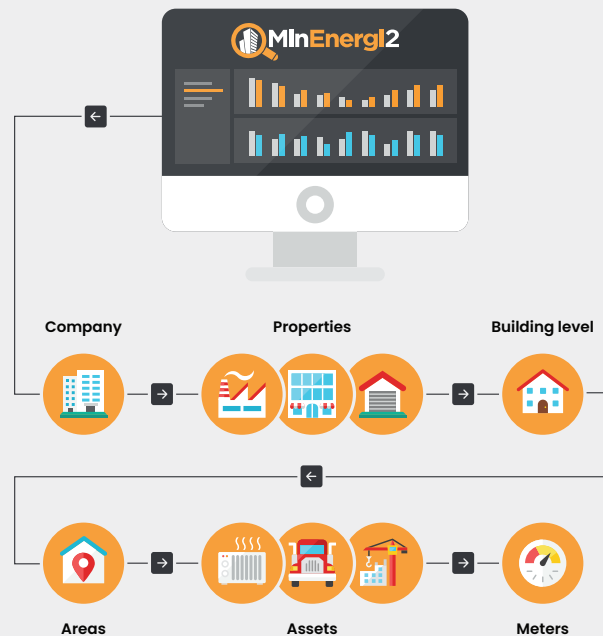
Climate reports generated in MinEnergi2 present a full overview of your company's carbon footprint. We deliver data collection and databases for the consumption-based reporting in the context of energy and resources. Your carbon emissions are documented in an automated climate report to facilitate compliance with the applicable requirements – directly from the system.

Bespoke data hierarchy for targeted insight and databases

The more you measure, the better the insight. We support you in building your data hierarchy, so you can be sure of precisely measuring the data that suits your company.

The system can generate a climate report featuring consumption and emission data at company level, for an individual building, an area of consumption (warehouse or production department, for example), or for an individual production facility, if you would like to track carbon emissions per unit.

At the same time, you can utilise individual emission factors all the way down to building level, which makes it possible to use the correct emission factors from each of your supply sources to make your climate reporting even more accurate.



Your company's climate impact is calculated in GHG Protocol Scopes

The climate report allows you to keep track of your company's carbon emissions in the fields of energy and resource consumption, and ensures that the calculations are performed according to a recognised method: the GHG Protocol.

Energy and consumption data is entered automatically and displayed in currency, kWh, tCO₂ and tCO₂/m². The data is also divided across Scopes 1, 2 and 3 as stipulated in the GHG Protocol. Additional climate-related activities can be registered manually, enabling you to add data to your climate report in MinEnergi2.

Climate data for ESG reporting

ESG reporting is the successor to CSR reports and has set the standard in recent years.

ESG comprises three reporting tracks (**Environment**, Social, Governance). We exclusively supply data bases in the "Environment" category.

This category includes:

- Energy consumption (electricity, heating, cooling, natural gas, etc.)
- Renewable energy production (wind turbines, solar power plants, surplus heat, etc.)
- Water consumption
- Scopes 1 & 2 (cf. the GHG Protocol)
- Scope 3 (cf. the GHG Protocol), to a certain extent
- Waste



Climate data for CSRD reporting

The CSRD Directive is the basis for "next generation sustainability reporting", which includes a requirement for companies to submit a climate report that provides information about their impact on the environment.

We calculate climate impact under Scopes 1, 2 and 3, and combine the three to provide you with a figure for the company's total impact. We can supply emission data on energy consumption (electricity, heating and cooling consumption), as well as on resource consumption (water, transport and waste) as data bases for your Scope 1 and 2 activities. CSRD features four reporting tracks (General, **Environment**, Social, Governance).

We exclusively supply data within the "Environment", which is consumption-based. We collect the data that you can include in your consolidated CSRD report, including the following ESRS:

- E1 Energy consumption
- E3 Water consumption
- E5 Waste



Other meter types and data sources, such as waste and fuel consumption

If your company has opted to use a variety of meter types, you are able to include their consumption measurements in your climate report based on the Scopes that cover the meter type in question. You can also use data from other software solutions such as waste, fleet and building management systems.

MinEnergi2 is an open, fully integrable platform, with the capacity to interact with other systems in your climate & environment setup via APIs.



About EnergiData

The EMS solution of the future.

In collaboration with our customers, we've created the future EMS solution. The focal point of our business is to develop and support our EMS platform. We have dedicated our business to one nerdy thing, which gives us unique expertise in energy monitoring.

We are an independent company under the ownership of the danish energy company OK. EnergiData has its headquarters in Køge, as well as a presence in Germany and the UK.

12.000+ buildings

70.000+ meters



Get smarter about your next steps

Contact us to learn more about the possibilities and potentials with the climate report in **MinEnergi2**.

Contact

Phone: +45 46141460

Mail: salg@energidata.dk

Headquarter

EnergiData A/S
Centervej 5
4600 Køge

Regional office, Jutland

EnergiData A/S
Åhave Parkvej 11
8260 Viby J

Book a demo



 **EnergiData**
A part of **OK**

www.energidata.com/en